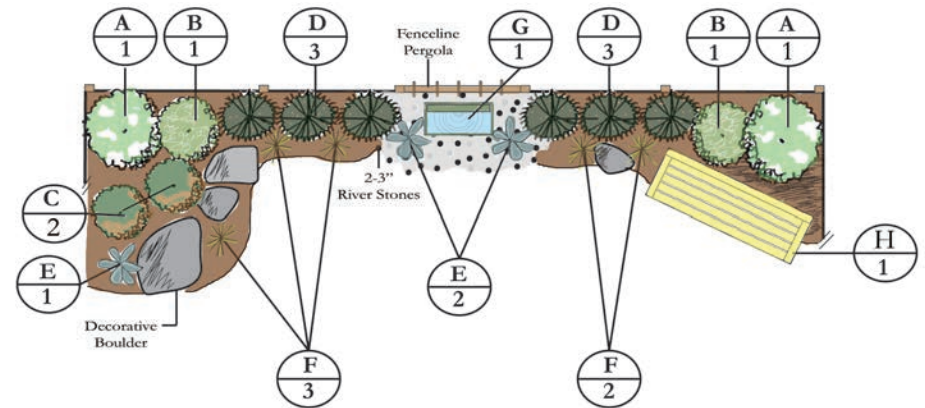


Shady Fence Line (\$2300 - \$2700 depending on selections)



Plants, Materials & Supplies

- A. Limelight™ Hydrangea Std. PW® (2)
- B. Carol Mackie Daphne (2)
- C. Oregon Grape (2)
- D. Sky Pencil Japanese Holly (6)
- E. Blue Hosta (*selection may vary*) (3)
- F. 'All Gold' Japanese Forest Grass (5)
- G. Fountain/ equipment (*selection may vary*) (1)
- H. Garden Bench (*selection may vary*) (1)
- Decorative Boulder/ Armour Stone (4)
- Bulbs: Anemone
- Annuals: Begonia (summer)

- Garden Sculpture(s)
- Parkwood® Transplanter (2 bottles)
- Parkwood® 3 in 1 Planting Mix (approx. 40 bags/1.5 yards)
- Fafard® Cedar Mulch (40 bags/1.5 yards)
- Maynooth River Stones (12 bags)
- Parkwood® All Purpose Plant Food 20-20-20
- Jobe's® Tree and Shrub Fertilizer Spikes (10 Spikes)

10 Essential Tools

- Garden Spade, Hoe, Hard Rake, Pruners, Garden Hose w/Nozzle,
- Good Broom, Hand Trowel, Fan Rake, Wheelbarrow.



Sheridan
Nurseries
100+ YEARS

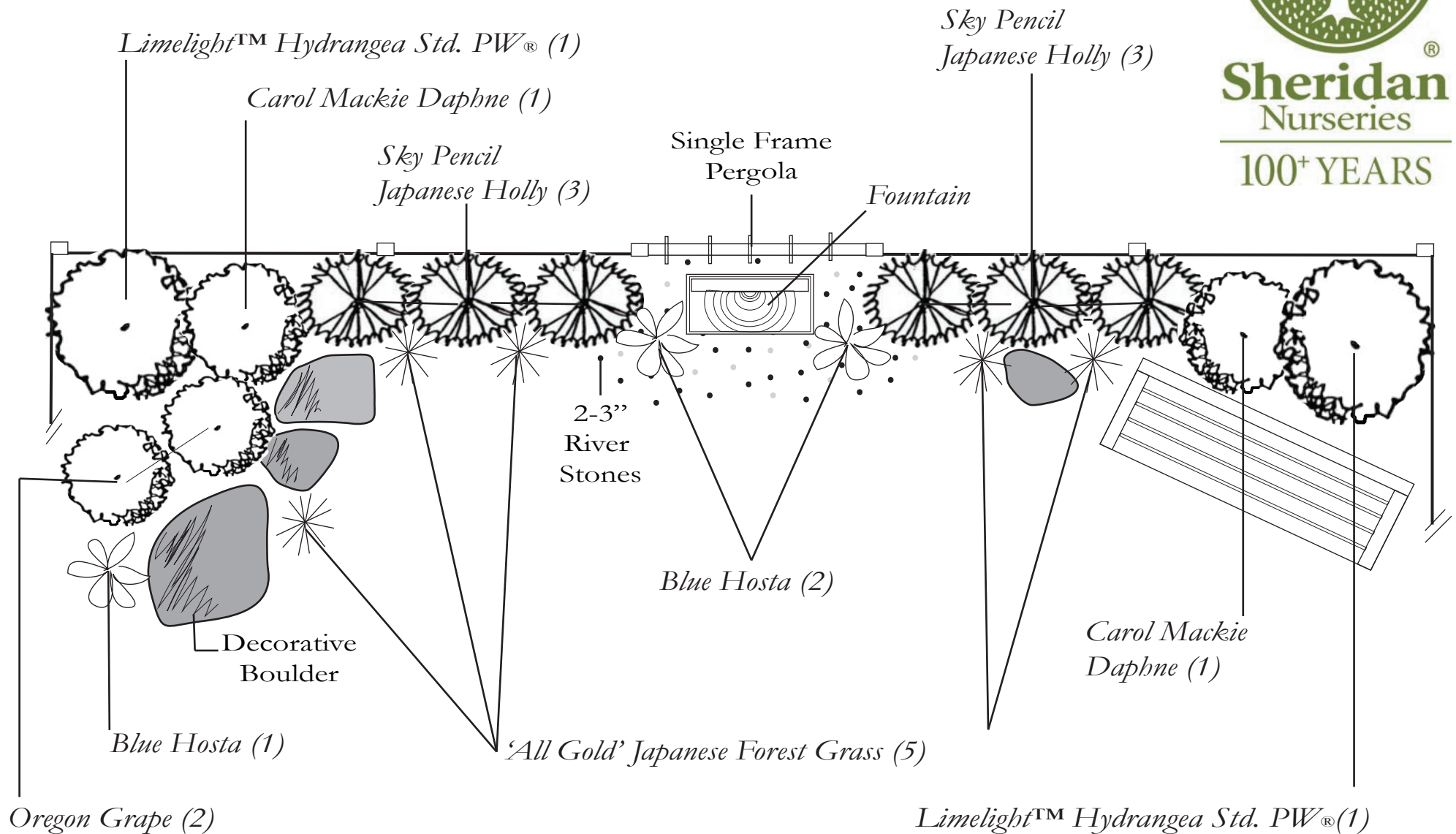


Shady Fence Line

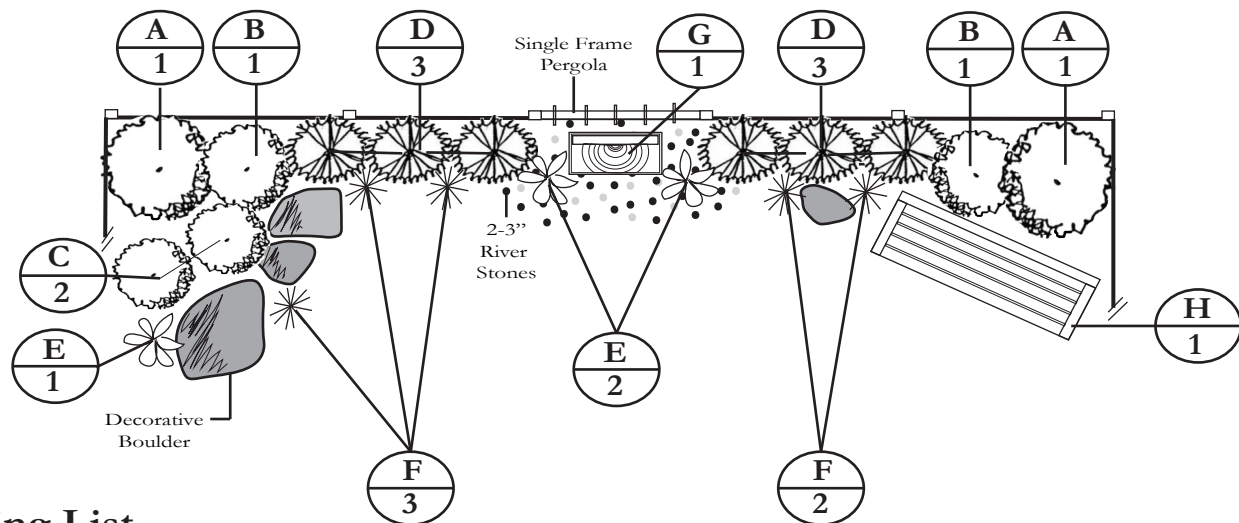
Plant Species and variety may vary by store and availability.



Sheridan
Nurseries
100+ YEARS



Landscape Plan: Shady Fence Line



Shopping List

- A. Limelight™ Hydrangea Std. PW® (2)
- B. Carol Mackie Daphne (2)
- C. Oregon Grape (2)
- D. Sky Pencil Japanese Holly (6)
- E. Blue Hosta (*selection may vary*) (3)
- F. 'All Gold' Japanese Forest Grass (5)
- G. Fountain/equipment (*selection may vary*) (1)
- H. Garden Bench (*selection may vary*) (1)
- Decorative Boulder/ Armour Stone (4)
- Bulbs(Rhizome): Anemone
- Annuals: Begonia (summer)
- Garden Sculpture(s)
- Parkwood® Transplanter (2 bottles)
- Parkwood® 3 in 1 Planting Mix (40 bags)
- Fafard® Cedar Mulch (40 bags)
- Maynooth River Stones (12 bags)
- Parkwood® All Purpose Plant Food 20-20-20
- Jobe's® Tree and Shrub Fertilizer Spikes (10)
- Garden Spade, Hoe, Hard Rake, Pruners, Garden Hose w/Nozzle, Good Broom, Hand Trowel, Fan Rake, Wheelbarrow.

D.I.Y. Installation Steps

Layout the garden. A hose or rope stretched to outline the new beds works well.

Remove sod, stones and debris from area.

Turn half of the Parkwood® 3 in 1 Planting Mix into existing soil.

Lay landscape fabric under area for fountain/stones.

Place plants as per plan. Mark each location.

Dig a hole twice as wide as the container and 20 cm (8") deeper.

Remove pot/ root ties. If the root ball is compacted, gently loosen it at the bottom and on the sides with a shovel.

Place and fill in around each plant with Parkwood® 3 in 1 Planting Mix and press firmly to secure in place. Spread soil.

Water your new beds with Parkwood® Transplanter to reduce shock, as per package.

Spread mulch evenly over beds and water again with plain water until well saturated.

Enjoy your improved shady fence line!

*Your shady fence line garden provides colourful interest throughout the seasons. Many plant and accessory choices are made for shade and are available at the nursery for you to discover and try each year!



Sheridan
Nurseries
100+ YEARS